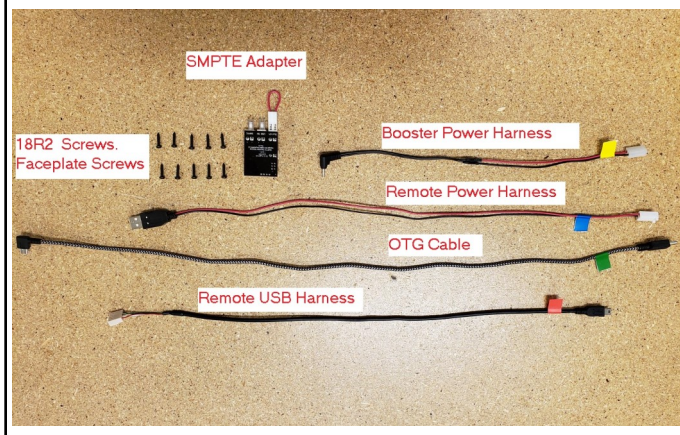


Parts Included



Tools Required

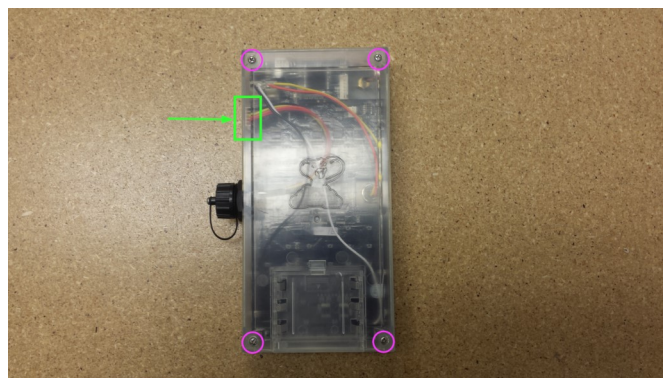


ASSEMBLY INSTRUCTIONS

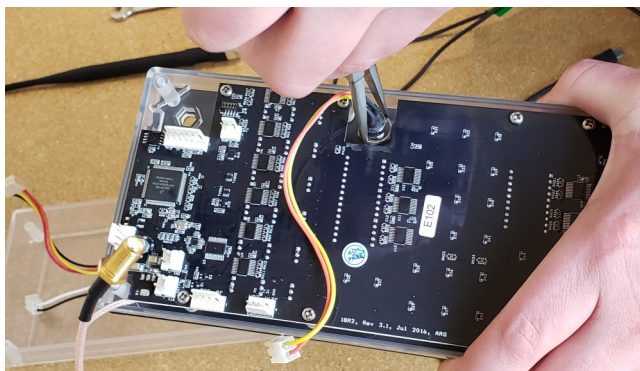
Step 1: Remove the antenna connector nut, push the connector through the hole. Remove the two screws from the front of the enclosure.



Step 2: Remove the four corner screws from the back of the remote enclosure, and disconnect the USB harness from the 18R2. Disconnect Deadman harness if installed.



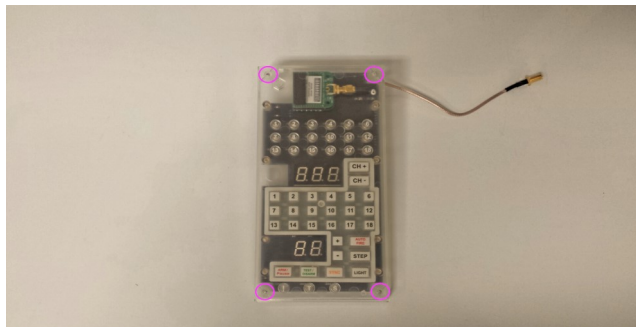
Step 3: Disconnect the keyswitch harness from the remote, unscrew the keyswitch nut to remove the keyswitch.



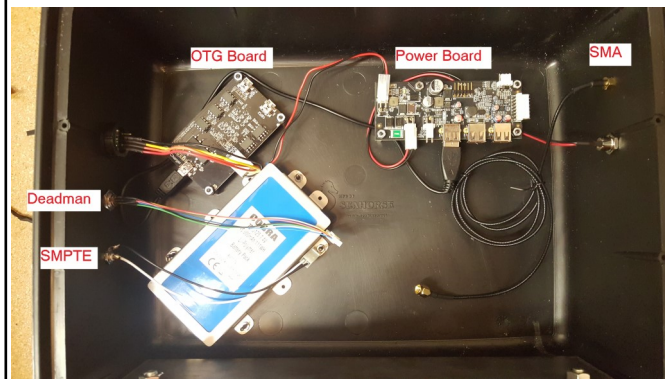
Step 4: Remove the 18R2 faceplate. Set aside keyswitch, faceplate, and back enclosure as extra parts.



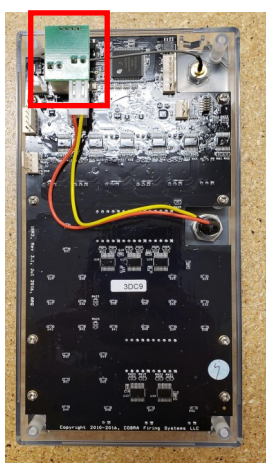
Step 5: Drill four pilot holes from the front of the remote enclosure in the center of the guide posts for the remote mounting screws.



Step 6: Open Command Center and remove faceplate. Inside part diagram below.



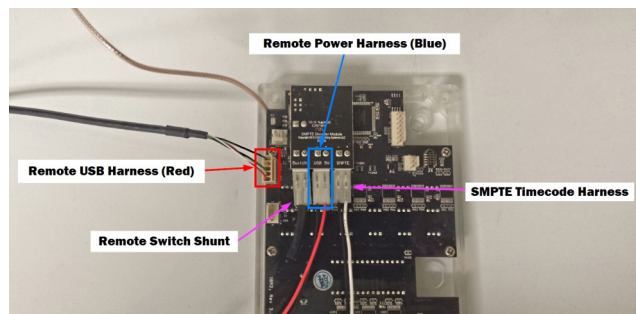
Step 7: Remove the green sunlight adapter. This part may not be present. Connect the SMPTE board to the remote in place of the green sunlight adapter.



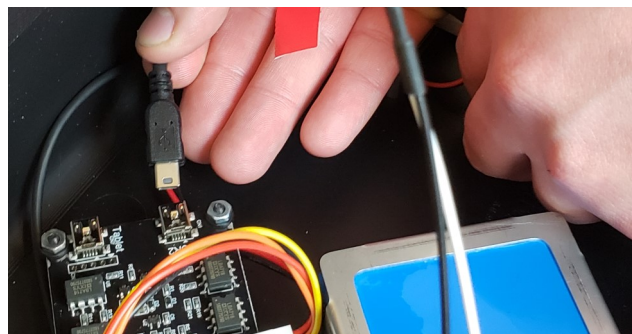
Step 8: Set the remote enclosure in place underneath the Command Center faceplate, and fasten the remote mounting screws in the four corner holes.



Step 9: Turn the Command Center faceplate over and connect the remote USB and remote power harnesses to the 18R2 as shown below:

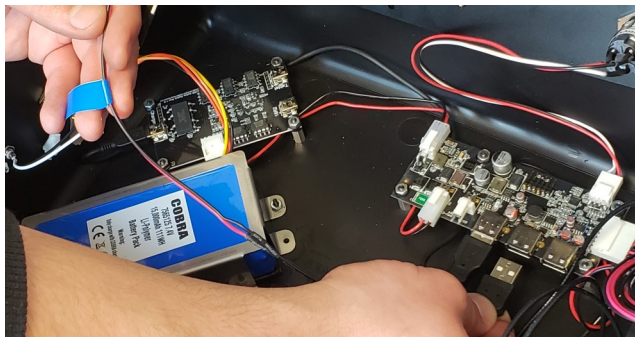


Step 10: Connect the other end of the remote USB harness (Red) to CN1 ("18R2") on the OTG board.

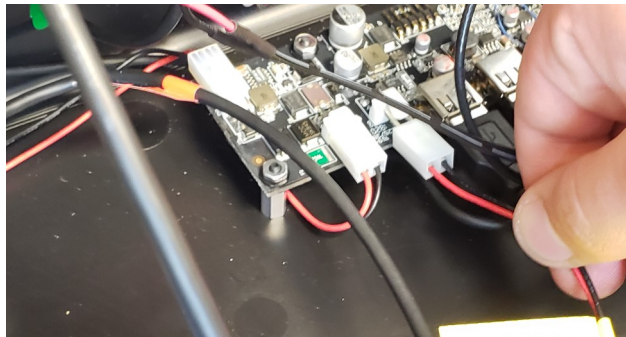


Step 12-16 only needed if installing a booster. Skip to step 17 if no booster is being installed.

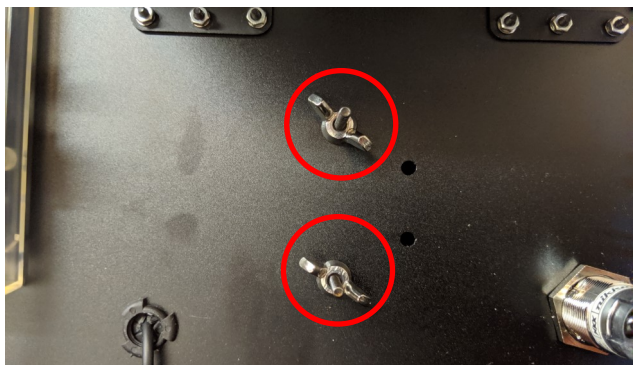
Step 11: Connect the other end of the remote power harness (Blue) to CN5 on the Power board (Middle USB Port).



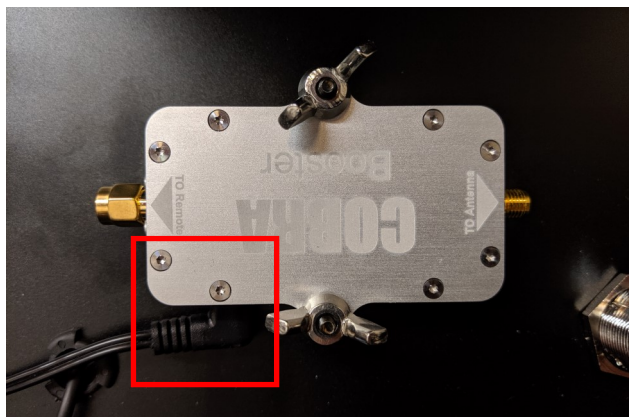
Step 12: Connect the USB end of the booster power harness (Yellow) to CN3 on the Power board.



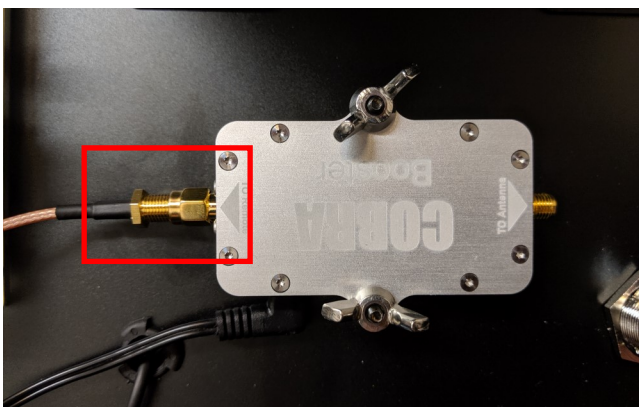
Step 13: Remove the wing nuts from the booster guide screws on the back side of the faceplate. Place the booster over the screws and secure with the wing nuts.



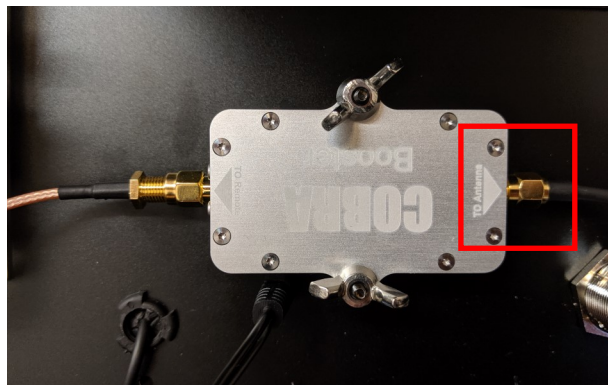
Step 14: Connect barrel plug of booster power harness to the booster.



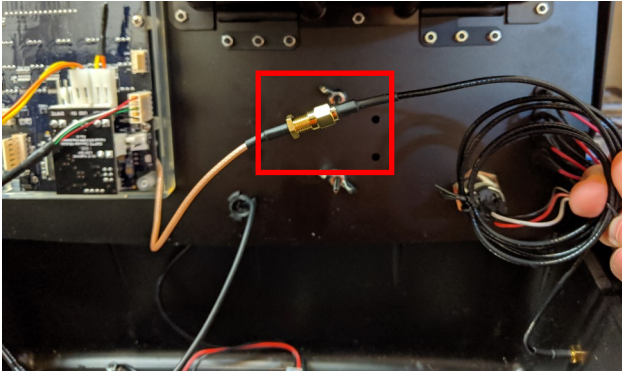
Step 15: Connect the antenna connector cable from the 18R2 to the booster.



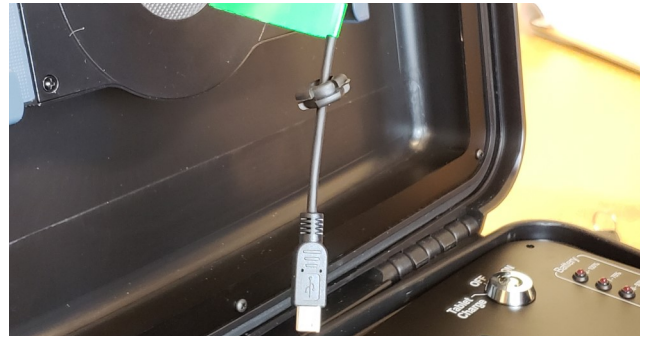
Step 16: Connect the antenna connector cable from the Command Center to the other end of the booster.



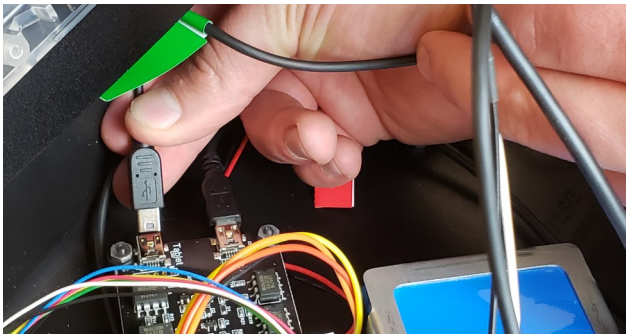
Step 17 (Skip to 18 if booster is installed):
Attach remote SMA cable to black SMA exiting side of case.



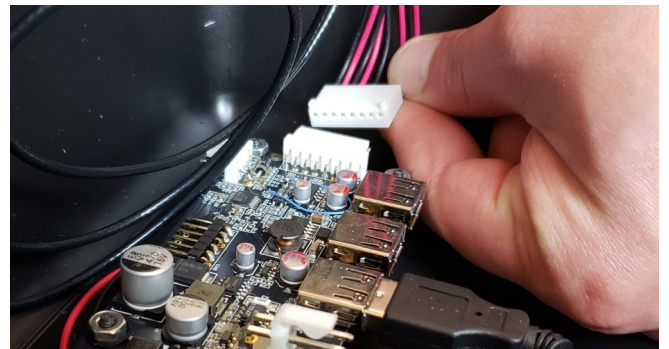
Step 18: Feed the tablet OTG/Charge harness through the top grommet on the Command Center faceplate.



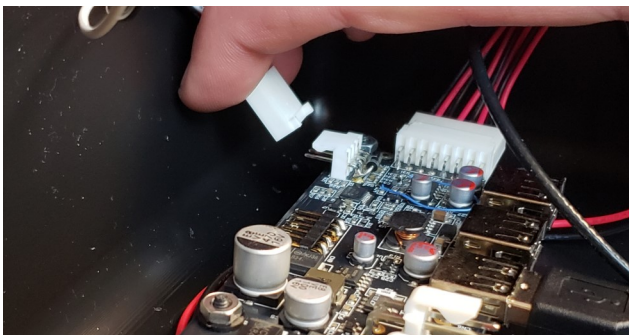
Step 19: Connect the micro USB end of the tablet OTG/Charge harness (Green) to CN7 ("Tablet") on the OTG board.



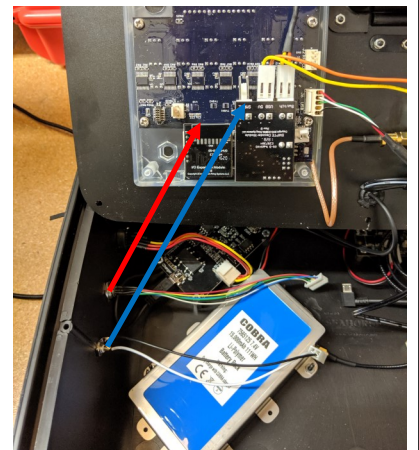
Step 20: Connect the charge LED harness to CN9 on the Power board.



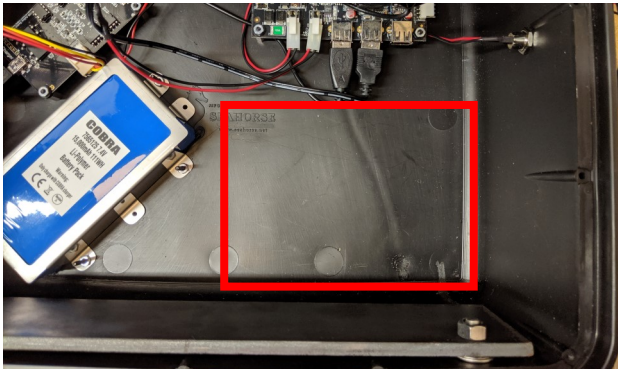
Step 21: Connect the Command Center keyswitch harness to CN7 on the Power board.



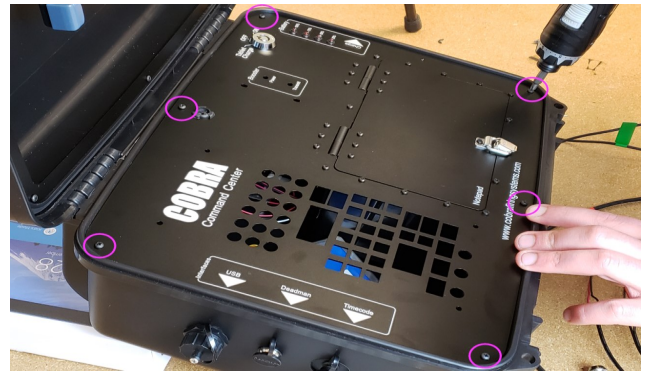
Step 22:
Connect the Deadman harness (If installed on 18R2) and SMPTE harness.



Step 23: Make sure no wires will be trapped under compartment area before proceeding to step 24.



Step 24: Install six perimeter screws back onto the Command Center faceplate.



Step 25: Mount tablet to the tablet holder, and connect the tablet OTG/Charge harness to the tablet.



Step 26: (Optional) Attach Dry Erase notepad sticker on Lid of compartment.



Step 27: The remote will need to be on firmware version 5.1.0 in order to use the SMPTE adapter.

Proceed to "www.cobrafiringsystems.com/software_versions_upgrades" for instructions on how to download and upgrade your equipment to 5.1.0.

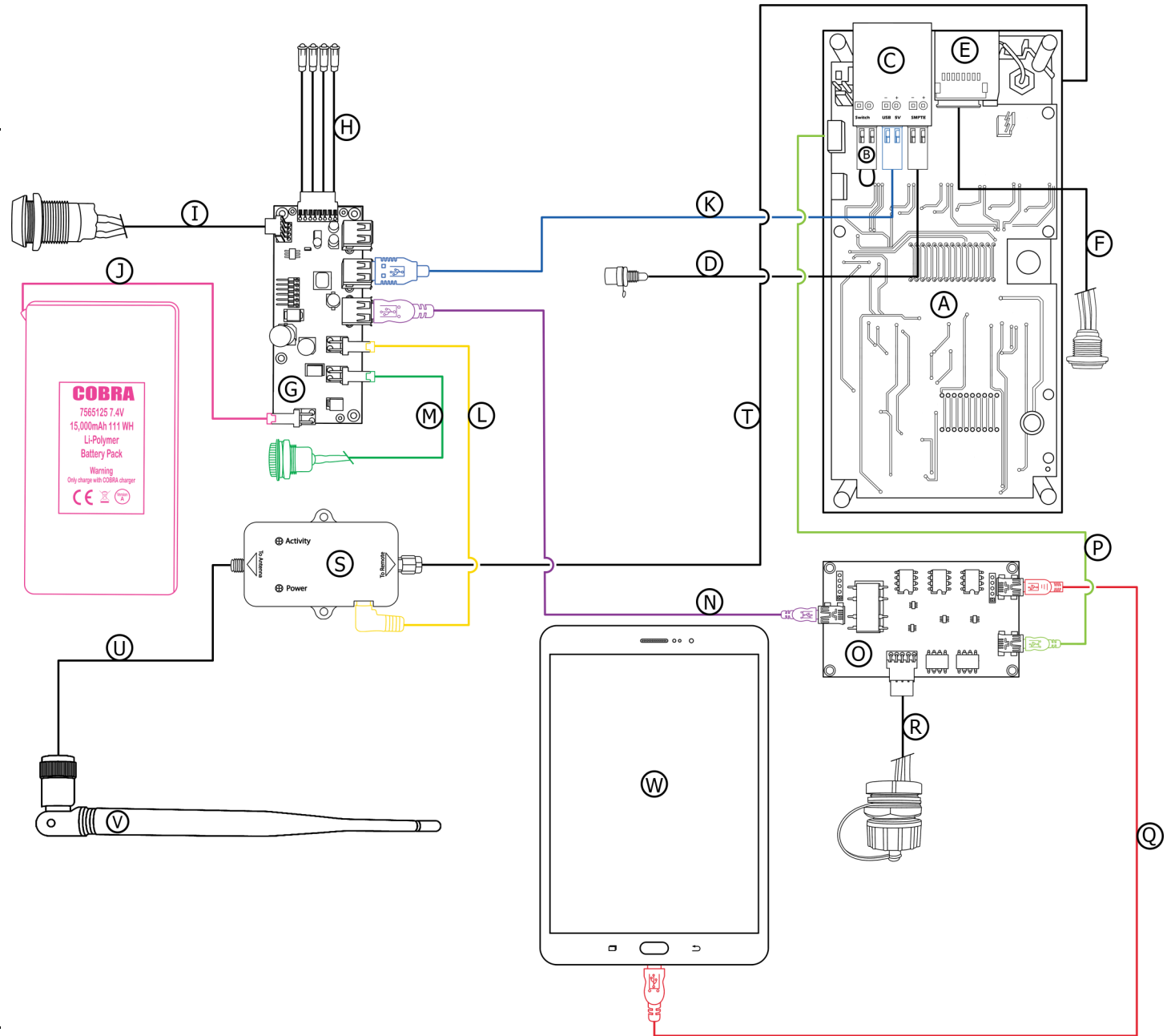
Congratulations! You have now finished assembling your COBRA Command Center!

COBRA

Wireless Firing Systems

COMMAND CENTER

- A 18R2
- B 18R2 Keyswitch Shunt
- C SMPTE Board
- D SMPTE Harness
- E Deadman Board
- F Deadman Harness
- G Recharge PC Board
- H Battery Harness
- I Keyswitch
- J 7.4V LiPo Battery
- K 18R2 Power Cable
- L Booster Power Cable
- M Charge Port
- N Connector Cable
- O OTG PC Board
- P 18R2 OTG Cable
- Q Tablet Cable
- R USB Harness
- S Booster
- T 18R2 Internal Antenna Cable
- U Antenna Extension Cable
- V Antenna
- W Tablet



Components will arrive with a colored identifying sticker on them that corresponds with the colors on this document.



Wireless Firing Systems

COMMAND CENTER INSTALLATION SCHEMATIC

Identifier	Part	Description
A	18R2	Provides firing functionality
B	18R2 Keyswitch Shunt	Shunts internal keyswitch port on 18R2
C	SMPTE Board	Provides SMPTE functionality
D	SMPTE Harness	Connects SMPTE Port to SMPTE Board
E	Deadman Board	Provides deadman functionality
F	Deadman Harness	Connects Deadman Port to Deadman Board
G	Recharge PC Board	Provides recharge functionality
H	Battery Harness	Connects 7.4V LiPo Battery to Recharge Board
I	Keyswitch	Panel mounted keyswitch
J	7.4V LiPo Battery	15,000 7.4V LiPo battery
K	18R2 Power Cable	Connects Recharge Board to SMPTE Board on 18R2
L	Booster Power Cable	Connects Booster to Recharge Board
M	Charge Port	Panel mounted charge port
N	Connector Cable	Connects OTG Board to Recharge Board
O	OTG PC Board	Provides OTG functionality
P	18R2 OTG Cable	Connects OTG Board to 18R2
Q	Tablet Cable	Connects OTG Board to tablet
R	USB Harness	Connects OTG Board to panel mounted USB Port
S	Booster	Signal amplifier for improving overall signal strength
T	18R2 Internal Antenna Cable	Connects 18R2 to Booster or Antenna Extension Cable
U	Antenna Extension Cable	Connects 18R2 or Booster to panel mounted antenna connector
V	Antenna	Connects to 18R2 or optional Booster
W	Tablet	Android tablet with Control Panel Software